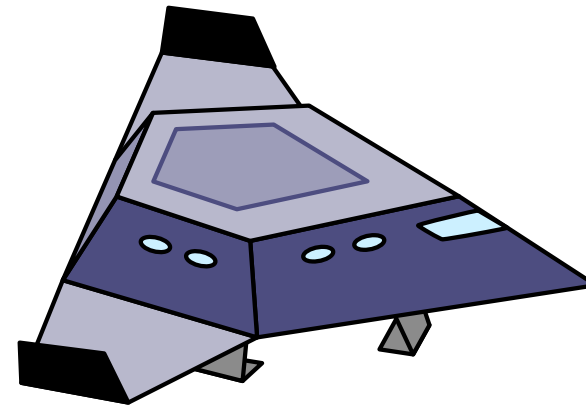
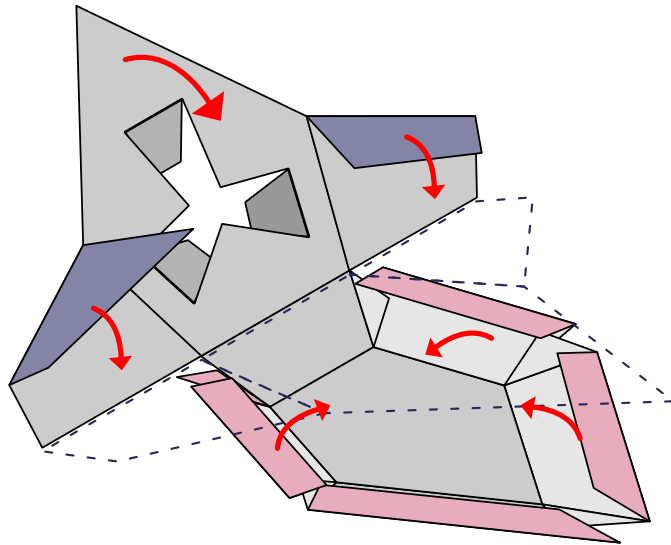


Space Ship



1



Printing on plain paper works, but for best results, print on Smooth Card Stock (65# Cover) or other heavy weight (thick) paper.

Most Ink Jet printers can handle thick paper, but you may want to check your Printer's manual to make sure it does.

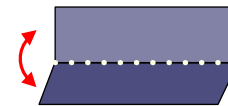
2



Cut out along the dashed lines using a pair of scissors.

Parental guidance is advised when small children are using scissors.

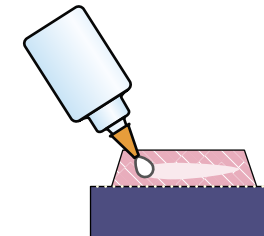
3



Fold along the dotted lines. Some cut-outs fold in-ward, others fold outward. Use the illustrated guides below to see which direction to fold cut-outs.

For cleaner folds, score the fold lines using a paper clip or an empty pen and straight-edge before folding.

4

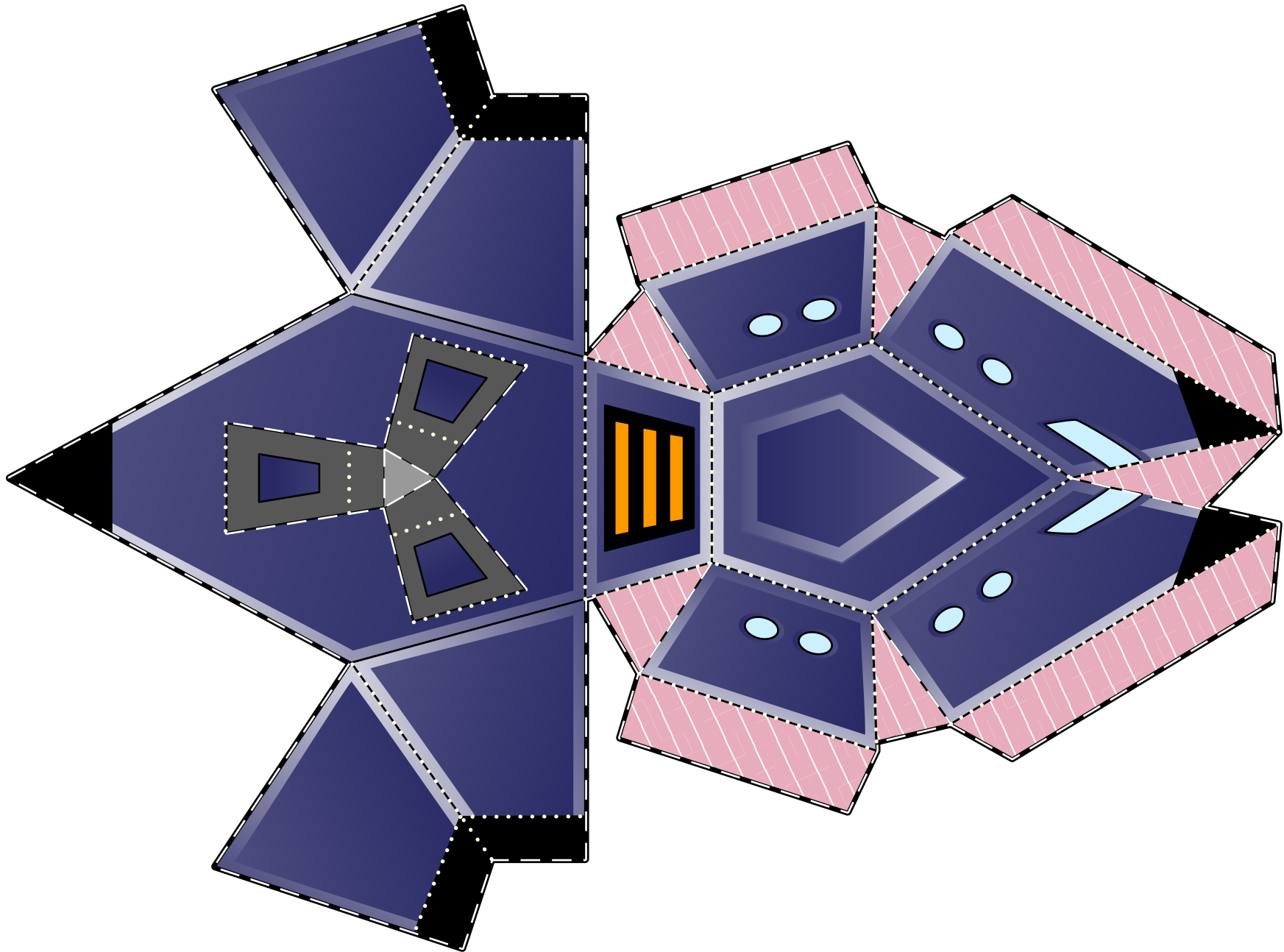


Apply Glue to the pink-stripe tabs and to the unprinted side of the cow, sheep and swan cut-outs. Use a glue stick or craft paste. (Wet glue tends to wrinkle the paper.)

For quicker assembly, tape can be used in place of glue.

Space Ship

PRINT-n-PLAY TOYS



If you appreciate these toys, We would appreciate a **donation** of \$5.00.

Copyright© 2003, McGuire Design