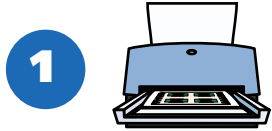


Retro Mac



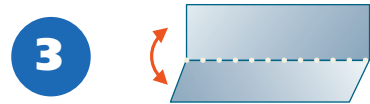
1

Print on smooth, bright Card Stock. Most Ink Jet printers can handle thick paper, but you may want to check your Printer's manual to make sure it does.



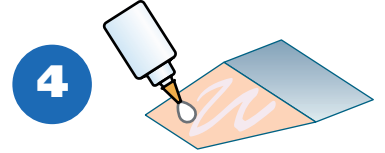
2

Cut out along the **dashed** lines using a pair of scissors.



3

Fold along the **dotted** lines. Match the numbers on the triangles to help assembly.



4

Apply **Glue** to the tabs. Use a glue stick or craft paste. (Wet glue tends to wrinkle the paper.)

